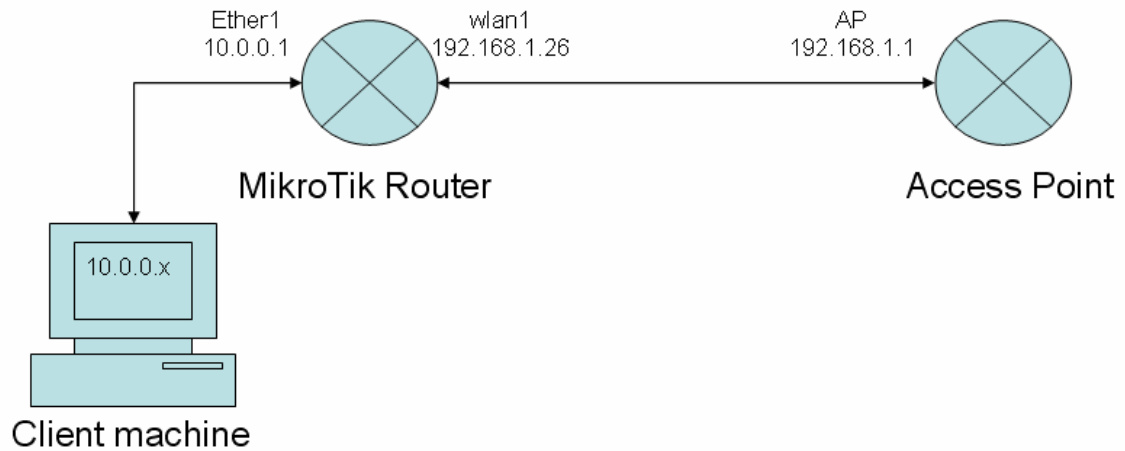


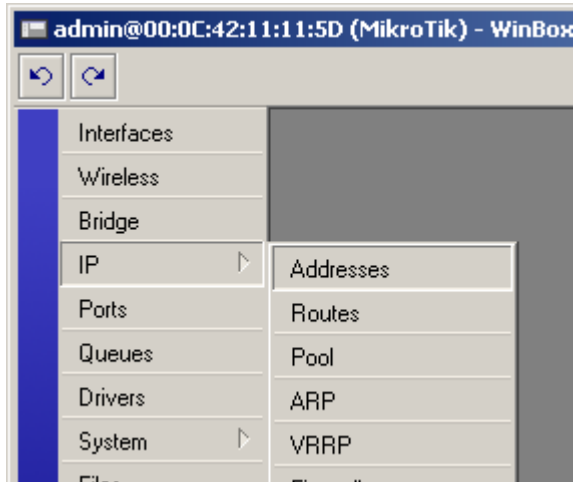
## MikroTik Routing Client Configuration

### Example Configuration

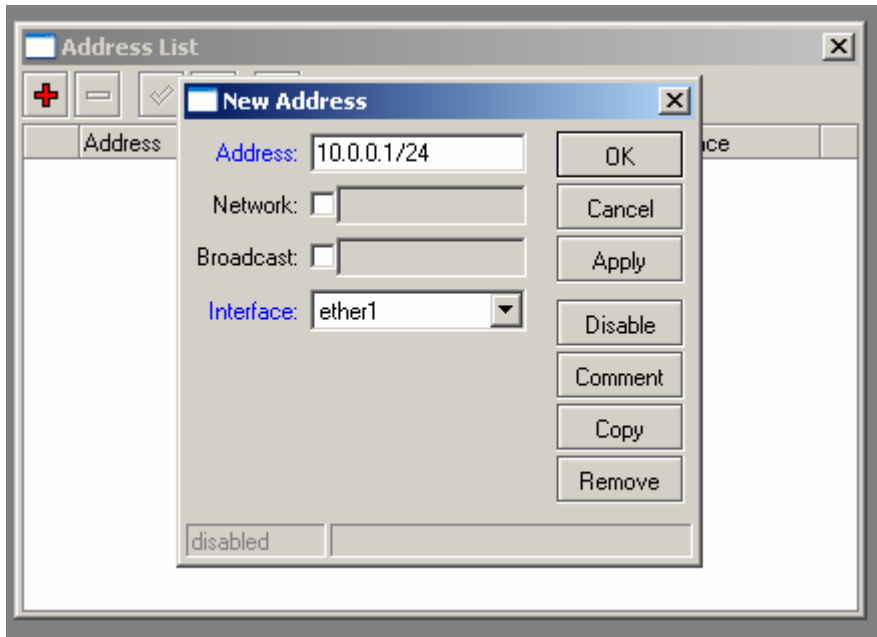


### 1) Set up the ip addresses

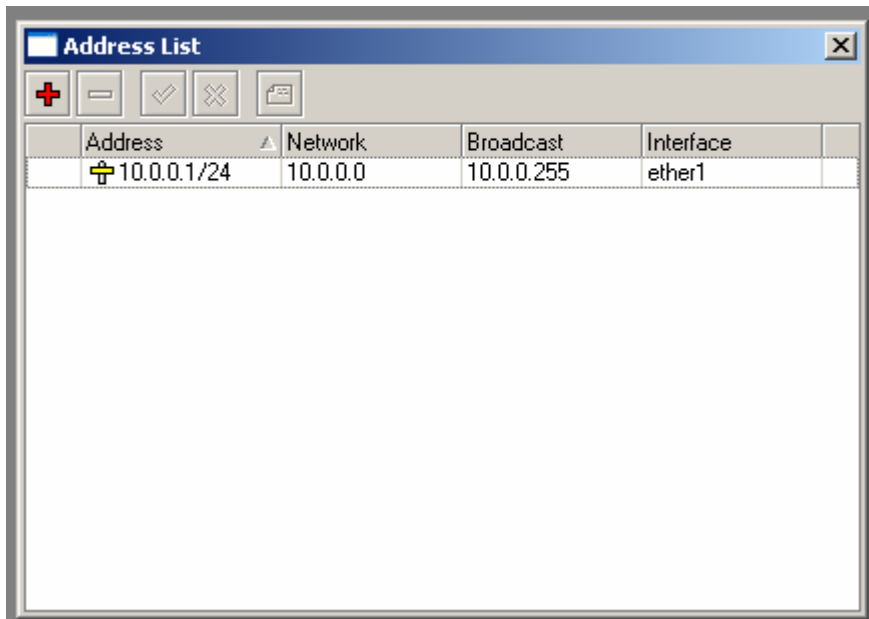
Click on IP -> Addresses



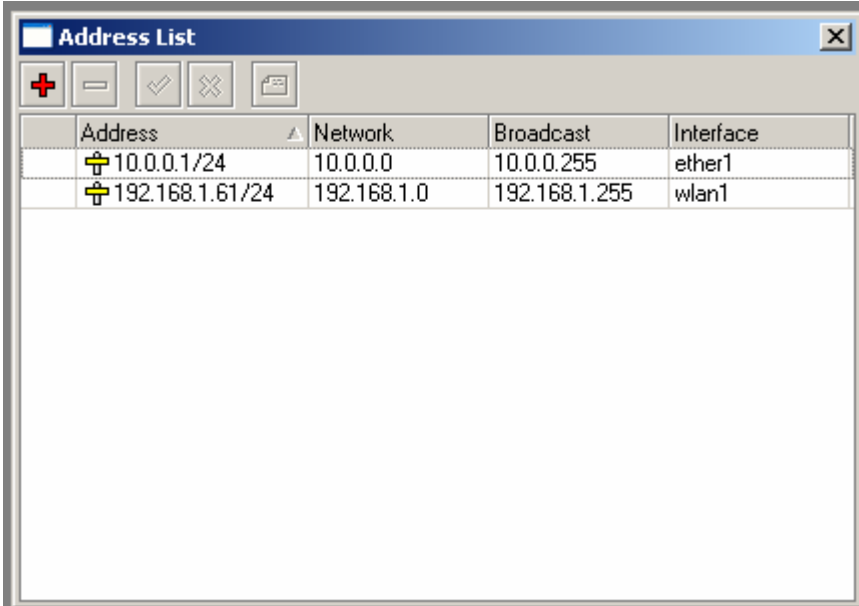
Click on the red + sign to add an ip address



Enter the address in the format `aaa.bbb.ccc.ddd/nn` where `/nn` is the subnet mask. i.e. `192.168.1.1/24` = ip address `192.168.1.1`, subnet `255.255.255.0`. Ensure the interface is `ether1`, then click on ok



Repeat to add an ip address for the WLAN1 interface

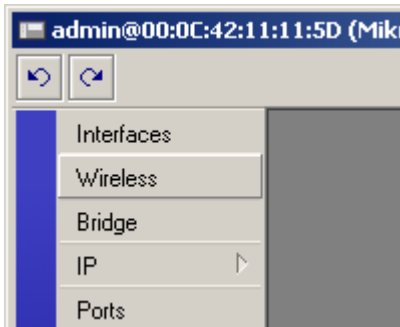


The image shows a window titled "Address List" with a standard toolbar containing a red plus sign, a minus sign, a checkmark, an 'X', and a document icon. Below the toolbar is a table with the following data:

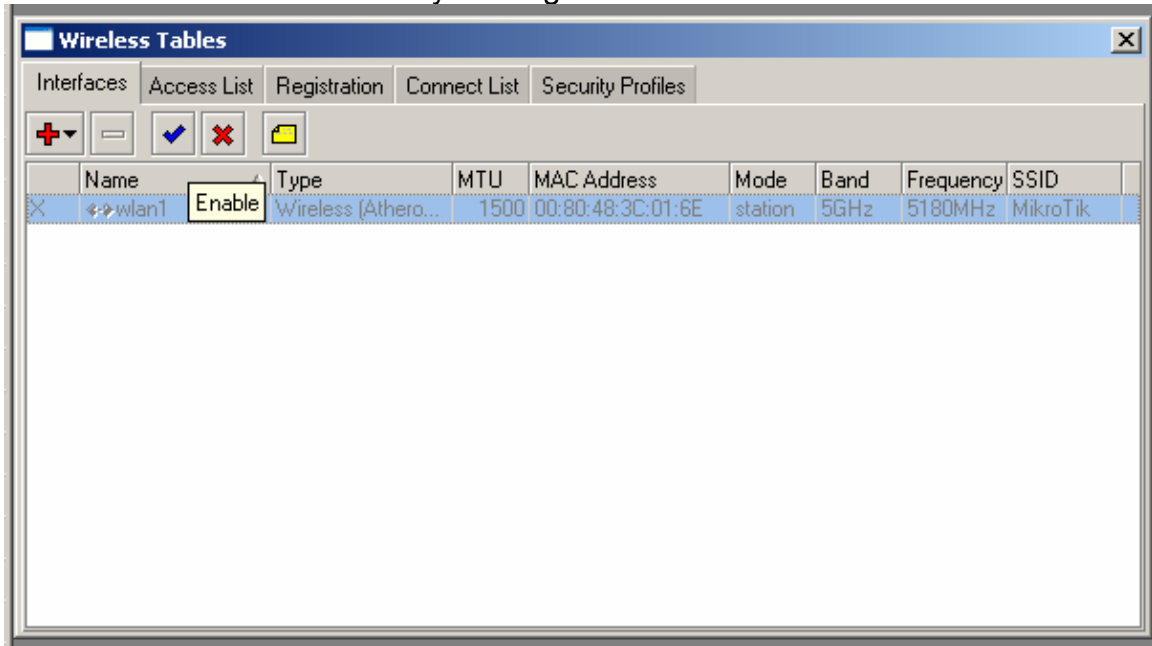
Address	Network	Broadcast	Interface
10.0.0.1/24	10.0.0.0	10.0.0.255	ether1
192.168.1.61/24	192.168.1.0	192.168.1.255	wlan1

2) Setup the wireless interface

Click on wireless

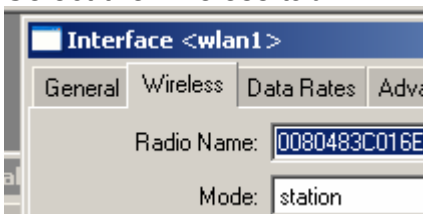


Select WLAN1 and enable it by clicking on the blue tick icon

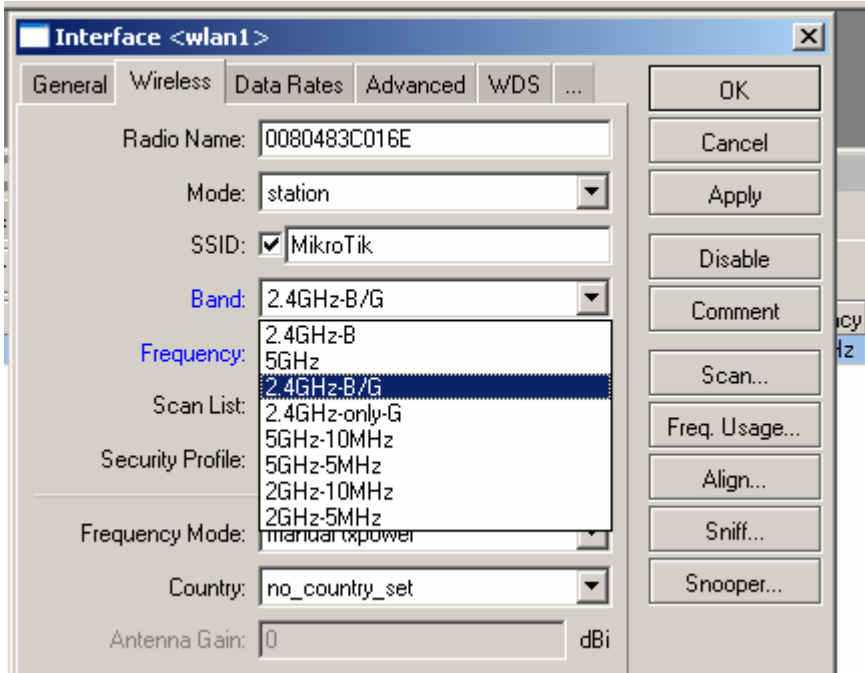


Double click on the interface to edit it's details

Select the wireless tab

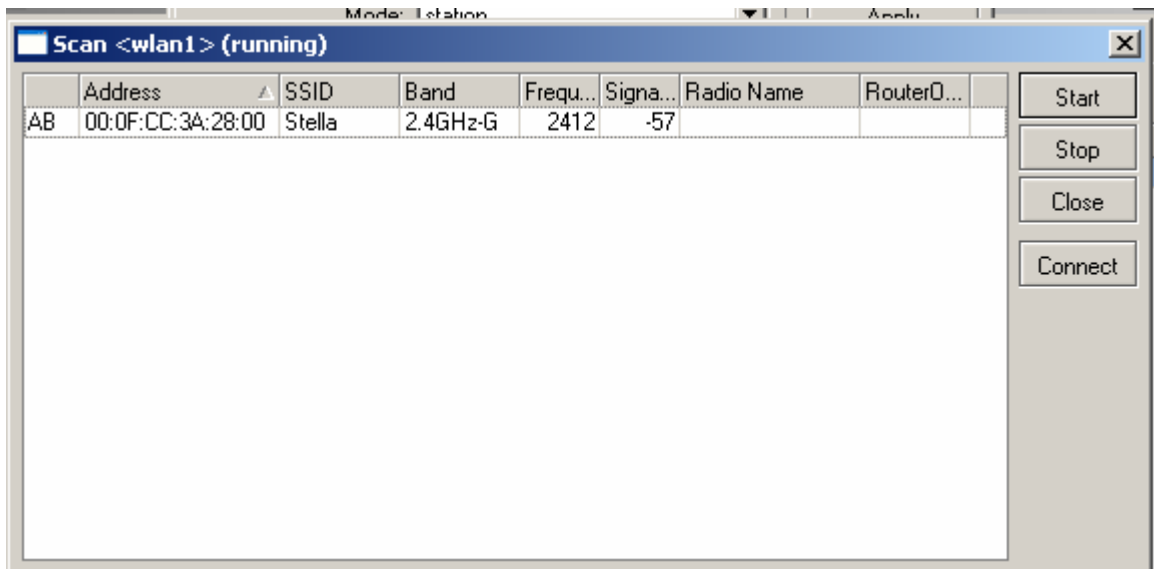


Select the frequency band from the frequency drop down list



Click on apply (IMPORTANT!)

Click on scan and then click on start to discover networks in range

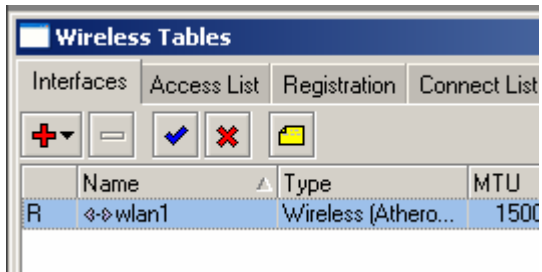


Select the required network, click on connect and then click on close

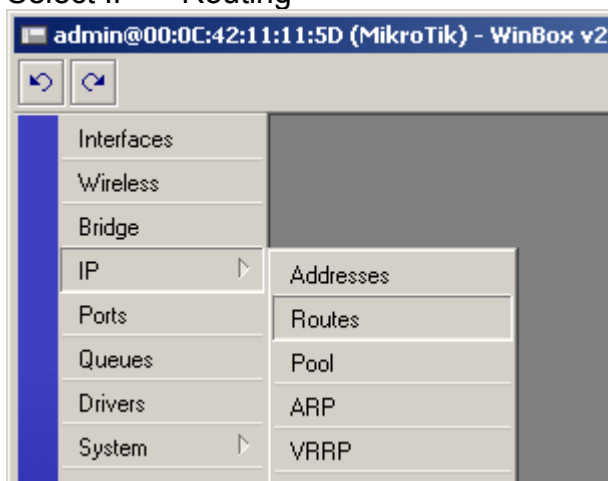
Click on ok to save changes

An 'R' will appear beside the interface to show that it is connected and

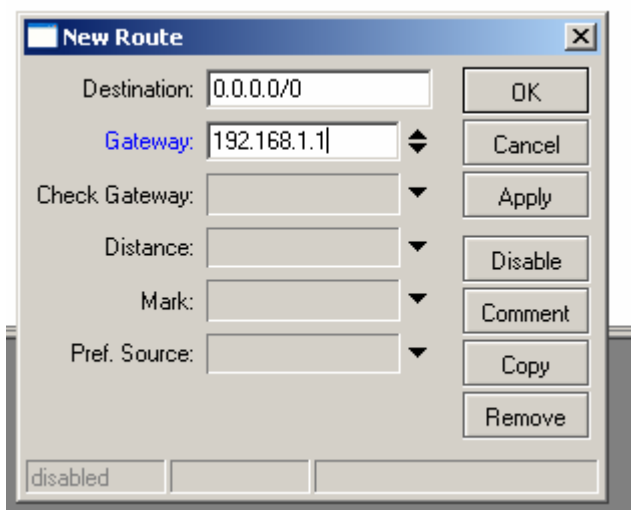
Running.



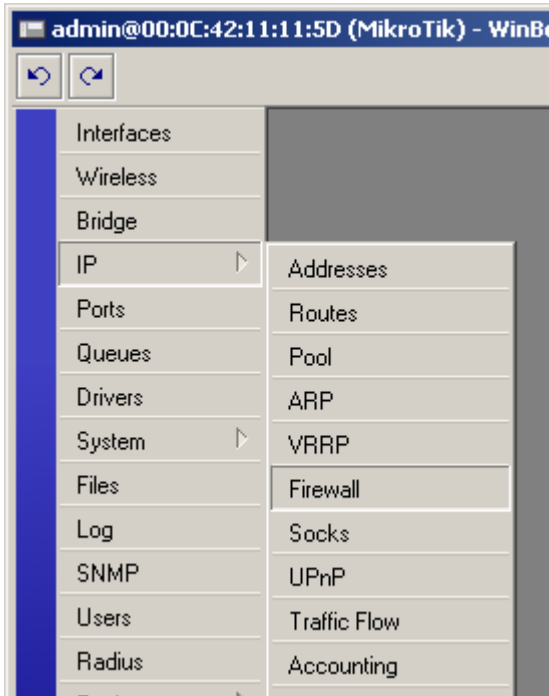
3) Set up routing  
Select IP -> Routing



Click on the red + to add the gateway  
Enter the gateway address and click on ok

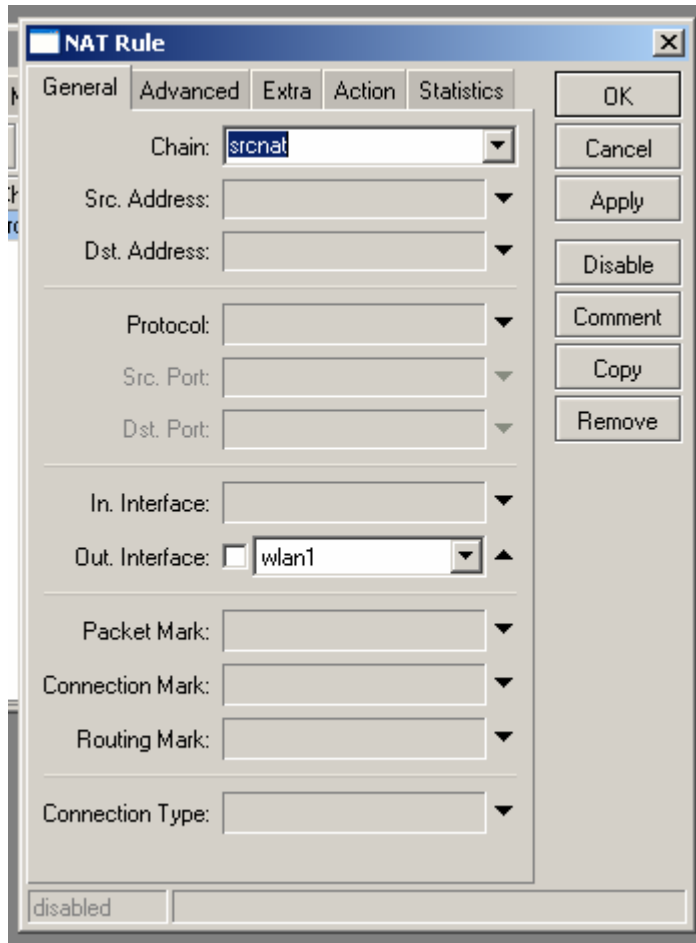


Click on IP -> Firewall

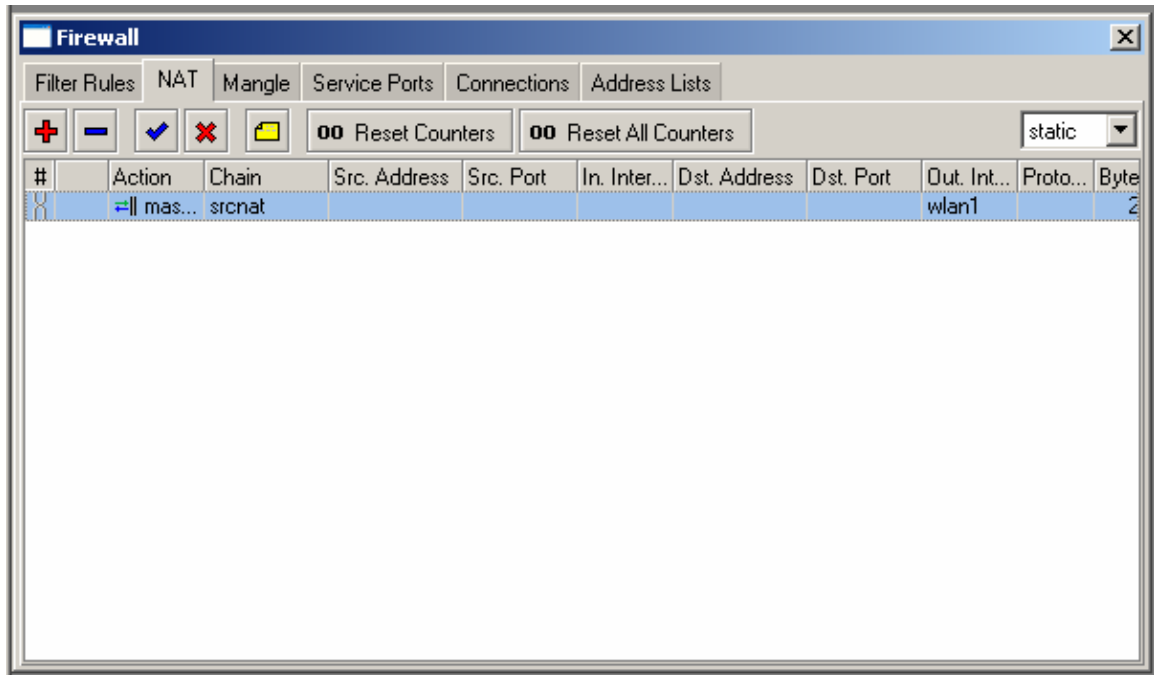


Click on the red + to add a firewall rule

In the general tab select the chain srcnat and out Interface wlan1.



Click on the action tab  
Select masquerade and click on ok



The MikroTik client is now configured.

For further information on other configuration options please refer to :

<http://www.mikrotik.com/testdocs/ros/2.9/>

<http://forum.mikrotik.com/>